



CATALOGUE

• Distribution • Installation • Ingénierie



- LA MAITRISE DES FLUIDES -

DISTRIBUTEUR AGREE TYCO FIRE PRODUCTS
DISTRIBUTEUR AGREE PROFIT BY PIPING LOGISTICS

Profit
BY PIPING LOGISTICS

www.africfireprotection.com

Johnson
Controls
tyco

TUYAUTERIE EN ACIER

TUBES ISO / API BOUTS LISSES, FILETÉS OU RAINURÉS :

+ TARIF 3 ET TRAF 10 (NOIR, GALVANISÉ, PEINT ROUGE).

+ API / ASTM : SCH40 / SCH80 (NOIR, GALVANISÉ, PEINT ROUGE).

RACCORDEMENT

+ ACCESSOIRES ET BRIDES EN ACIER À SOUDER

DIN TU34 ET ST 37 POUR TUBES TARIF 3 ET TARIF 10.

+ ACCESSOIRES ET BRIDES EN ACIER À SOUDER A216 WCB POUR TUBES API SCH40.

+ RACCORDS FILETÉS EN FONTE MALLÉABLE.



GROOVED COUPLINGS & FITTINGS UL / FM

- + U-BOLT SPRINKLER TEE | TYPE GST
- + GROOVED END CAP GE
- + GROOVED ELBOW 90°
- + GROOVED EQUAL TEE GT
- + GROOVED ELBOW 45° GB45
- + MECHANICAL TEE GROOVED OUTLET GMG
- + GROOVED FLEXIBLE COUPLING | GKF
- + GROOVED RIGID COUPLING | GKS
- + GROOVED CONCENTRIC REDUCER | TYPE GRC



POSTES & ROBINETTERIES UL/FM

Deluge and Preaction Systems



DV-5 A



Deluge Systems



Single Interlock Preaction Systems



Double Interlock Preaction Systems



RED-E Cabinet - Integrated deluge and preaction fire protection package

- The Tyco DV-5 A Valves are diaphragm type valves that can be used in deluge fire protection systems. They offer external resetting and size range between 1½" to 8" and a solid max. service pressure between 20 psi to 300 psi
- Comes with Wet Pilot, Dry Pilot, or Electric Actuation, Remote Resetting, or Remote Resetting Pressure Reducing systems
- The Tyco DV-5 A Single Interlock Preaction Systems offers Wet Pilot, Dry Pilot, or Electric Actuation. It also offers Double Interlock Preaction Systems that come with Electric/ Pneumatic Actuation
- The UL and FM-approved Tyco DV-5 A Red-E Cabinet is a pre-assembled fire protection valve package enclosed within a free-standing cabinet designed to occupy minimal floor space and to provide an aesthetically pleasing enclosure for a fire protection valve riser



Wet and Dry Pipe Sprinkler Systems



AV-1-300 Alarm Check Valve



RM-2 Riser Manifold



ACC-1 Dry Pipe Accelerator



Dry Pipe Valve

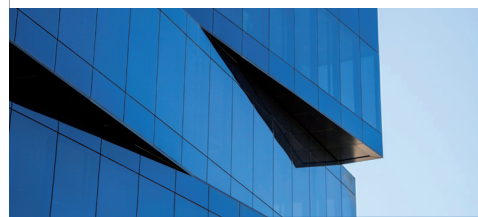


Quick Release Switch (QRS) Electronic Dry Pipe Accelerator



Air Maintenance Device

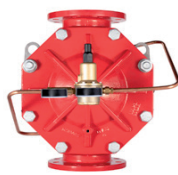
- Wet Pipe: UL and FM approved Tyco AV-1 Alarm Valves provide a working range of 20 to 300 psi ~ and size range between 2½" to 8"
- Wet Pipe: Tyco CV-1F Riser Check Valve can be installed using GRINNELL Grooved Couplings or GRINNELL Figure 71 Flange Adapters
- The Tyco Model RM-2 riser manifold is an integrated solution that includes a TD-2 test and drain valve, CV-1 check valve, flow switch and BFV-300 butterfly valve
- Dry Pipe sprinkler systems are designed for use where piping and sprinklers are subjected to freezing temperatures
- Dry Pipe: Tyco DPV-1 Dry Pipe Valve is UL Listed and FM approved and has a maximum working pressure of 250psi



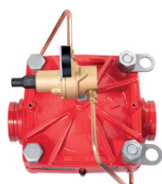
General Purpose Valves



Resilient-seated Gate Valve



Pressure Regulating Valve



Pressure Relief Valve



Butterfly Valve



Grooved Check Valve



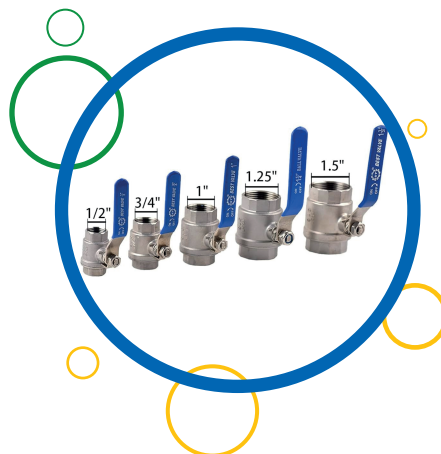
Trim Valve



- General Purpose Valves are designed for prevention of reverse flow, system shut-off, closure of the fire protection after operation, sectional control or facilitation of system testing
- The PRV-1 A is intended to automatically maintain the outlet "set pressure" (static and residual) within a close range, regardless of fluctuations in the higher pressure inlet line or varying flow rates
- The RV-1 A Pressure Relief Valve offers a max. inlet pressure of 250 psi and can be installed in any orientation. The UL and FM-approved RV-1 A comes in one-piece, one-moving-part diaphragm
- Tyco TJ Series Resilient-Seated Gate Valves are offered in multiple end connection configurations including: Flange by Flange, Flange by Groove and Groove by Groove
- The next-generation BFV-300 provides a 50% smaller gearbox and 40% lighter valve. It has a unique tapping boss for quicker upstream connection to prime line of deluge valve to pressure/flow switches or drain port

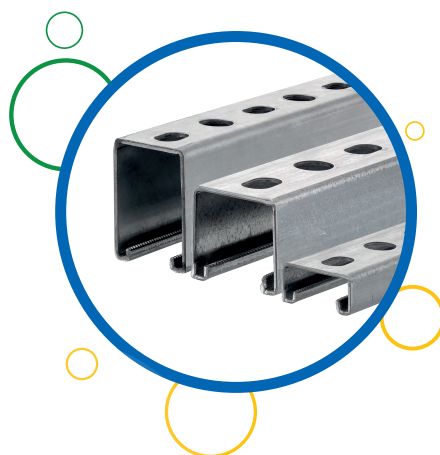
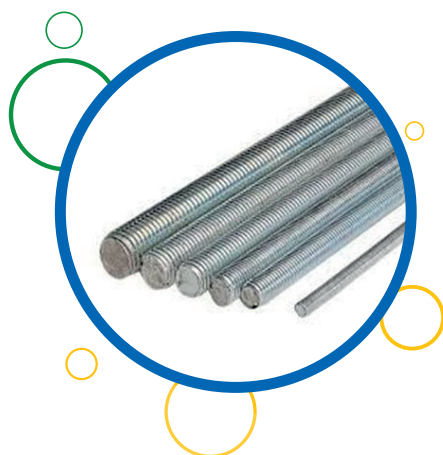
ROBINETTERIES EAU - INDUSTRIE :

- + Vannes à Sphère
- + Vannes papillons
- + Clapets anti retour
- + Filtres à tamis
- + Manchons anti vibration
- + Vannes OCA PN16-PN25



COLLIERS & SUPPORTAGE

- + COLLIERS A POIRE AGRÉÉ FM,
- + COLLIERS À JOINT.
- + RAIL, TIGES, BOULONS ET ÉCROUS.



TÊTES SPRINKLER - FLEXIBLES ET ACCESSOIRES UL/FM

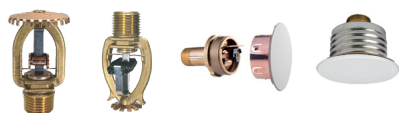
Standard / Extended Coverage Sprinklers



TY-B / TY-FRB

RF-II Concealed HSW

RFII & RFII-MRI



TY-L / TY-FRL

RFIII

ELO Concealed Pendant



Extended Coverage

ELO SW-20/SW-24



- Wide range of bulb, cover plate and fusible link sprinklers
- Kfactor range: K2.8 (40.3), K4.2 (60.5), K5.6 (80.6), K8.0 (115.2), K11.2 (161.3)
Extended coverage: K5.6 (80.6), K8.0 (115.2), K11.2 (161.3), K14 (201.6), K25.2 (362.9)
- Temperature range: Bulb: 57°C, 68°C, 79°C, 93°C, 141°C, 182°C
Cover Plate: 59°C and 74°C
Fusible Link: 74°C, 100°C, 138°C, 141°C
- Thread size: 1/2" NPT, 3/4" NPT and 1" NPT (for EC-25)
- Available in quick and standard response, and standard coverage

Storage Sprinklers

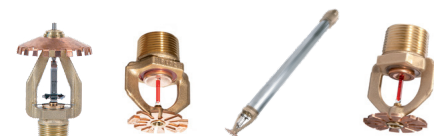


Rapid Install Sprinkler (RIS)

ESFR-34 Pendant

ESFR-25 Pendant

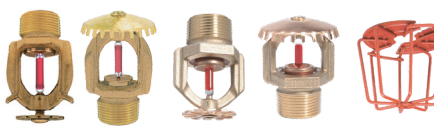
ESFR-22 Pendant



ESFR-17 Upright / ESFR-17 (bulb type sprinkler) Pendant

ESFR-17 Dry-Type Pendant

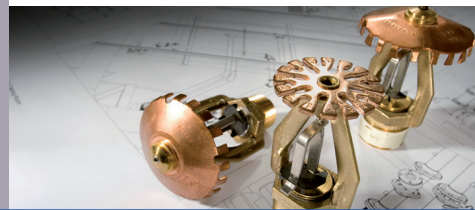
ESFR-14 Pendant



Extra Large Orifice Sprinklers ELO-231 Series

Ultra K-17

UL & FM Approved Sprinkler Guards



- UL Listed and FM-Approved Rapid Install Sprinklers can be installed with simple tool-free hand tightening, requiring less time working overhead
- ESFR-34 sprinklers can protect a storage arrangement of 15.2m with a ceiling height of 16.8m without requiring in-rack sprinklers. In addition, it can be installed with a maximum centerline of a thermal sensing element-to-ceiling distance of 432mm
- Suitable for high-pile storage, traditional warehouse layouts, box-in-box cold storage, high hazard commodity coverage, in-rack storage, beneath open gridded catwalk and more.
- Kfactor range: K5.6 (80.6), K8.0 (115.2), K11.2 (161.3), K14.0 (201.6), K16.8 (241.9), K22.4 (320), K25.2 (362.9) and K33.6 (480)
- Maximum coverage area of 18.2 m² (EC-25), which is almost double the area offered by standard coverage sprinklers
- Approved for storage heights of 7.6m and building heights of 9.1m (Ultra K-17)
- Extra-large orifice sprinklers proven for storage occupancies through full-scale fire testing (ELO-231 series)
- UL and FM-approved Sprinkler Guards designed for use with specific types of Series TY-B, TY-FRB, TY-L, and TY-FRL Sprinklers
- Eliminates the use of in-rack sprinklers when protecting high-piled storage

Residential Sprinklers and Dry Sprinklers



LFII



LFII - Domed Plate
Concealed Pendant



LFII - Concealed Pendant



LFII Horizontal
& Recessed Horizontal
Sidewall Sprinklers



Lead-free LFII Residential
Concealed Pendant Sprinkler



LFII Horizontal Recessed Side
Wall Sprinkler



WaterMark
WMK28392
WMTS 498-2016
Sprinklers for
home applications

WaterMark certification applies to selected models only. Please contact your local sales or customer service for more information

Residential Sprinklers

- Offer optimum design and flow characteristics for all residential applications
- Cover plate custom paint options available. Learn more at www.tyco-fire.com/custompaint
- K-factor range: K3.0 (43.2), K4.2 (60.5), K4.4 (63.4), K4.9 (70.6), K5.6 (80.6), K5.8 (83.5), K6.9 (99.4), K8.0 (115)



LFII Dry Type Residential
Pendant Sprinkler



LFII Residential Concealed
Horizontal Sidewall Sprinkler



Sprinkler Accessories



Sprinkler Cabinets



Escutcheon Plates



Flexible Hose



Style 65, One-Piece Flat Escutcheon

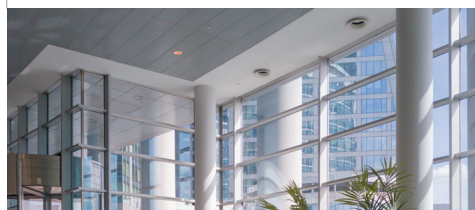
- For use with the sprinklers and nozzles described in this brochure to enhance product performance such as improving appearance, concealing clearance holes, protection from damage, onsite emergency storage supply

- Sprinkler head cabinets provide storage for spare sprinklers and sprinkler wrenches

- Tyco Model FH-1 Flexible Hose can be used in wet sprinkler systems between the branchline and sprinkler when installed in accordance with NFPA 13, 13D, and 13R



Style 401, Two-Piece Adjustable Escutcheon



Nozzle and Nozzle Accessories



Medium Velocity



HV "High Velocity"



EA-1 Automatic
Protectospray

- Designed for use in a variety of special hazard applications – may be required to provide a properly designed special hazard fire protection system

- D3 nozzles use external deflector types that discharge a uniformly filled cone of medium velocity water droplets

- HV (High Velocity) directional spray nozzles are designed for use in fixed water spray fire protection systems where a high velocity water application is needed

- Tyco TN-17 and TN-25 are specialized open nozzles for use in tunnel fire protection

Dry Sprinklers

- Dry Sprinklers are specifically designed for areas where sprinklers may be subjected to freezing conditions in cold climates such as unheated warehouses, loading docks, and covered exterior platforms

- Available in various orientations: Pendent, Upright and Horizontal Sidewall, Standard and Quick Response, Standard Coverage



Tunnel Nozzles



Directional
Spray Nozzles



Foam-Water Nozzles



DS-1



DS-2 Standard and
Extended Coverage



DS-8 Series, available in
Standard and Quick Response

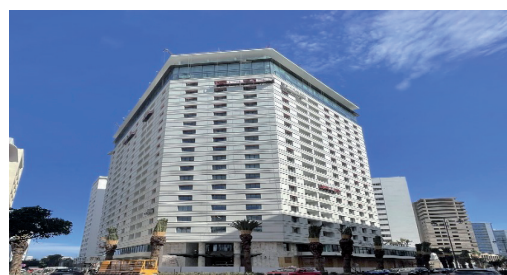


Quelques Référence & Applications

WAVE II



**HOTEL ROYAL
MANSOUR**



LEONI AGADIR



SONACID



STADE TANGER



**MARJANE SAPINO
CASABLANCA**



APTIV TANGER



PROJET JFC



**LABORATOIRE
SANOFI MAPHAR**



FAURECIA



MACHREB STEEL



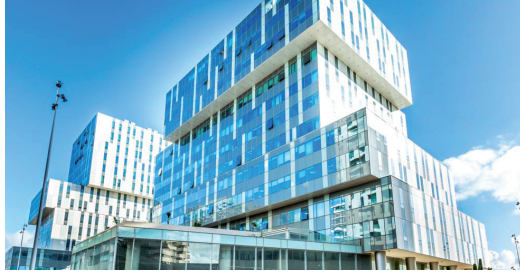
TANGER MED



CMCP KENITRA



USINE SFC



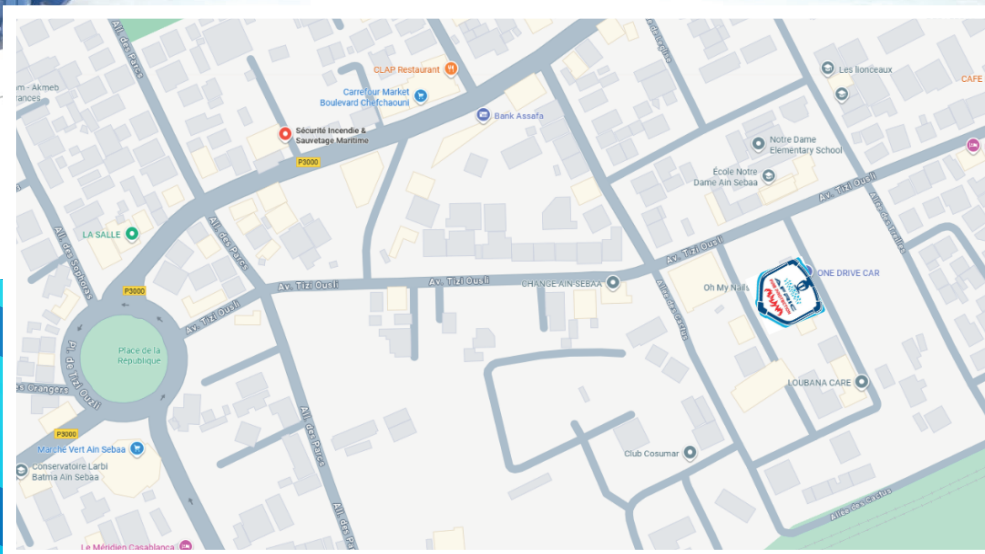
**OCP
KHOURIBGA**



**LAVERIE
BENGUERIR**



La Maitrise des Fluides



📍 22, Avenue Tizi Ousli, Magasin N° 2
20250 Aïn Sebaâ - Casablanca
☎ : +212 522 35 52 54
✉ : africfirepro@gmail.com